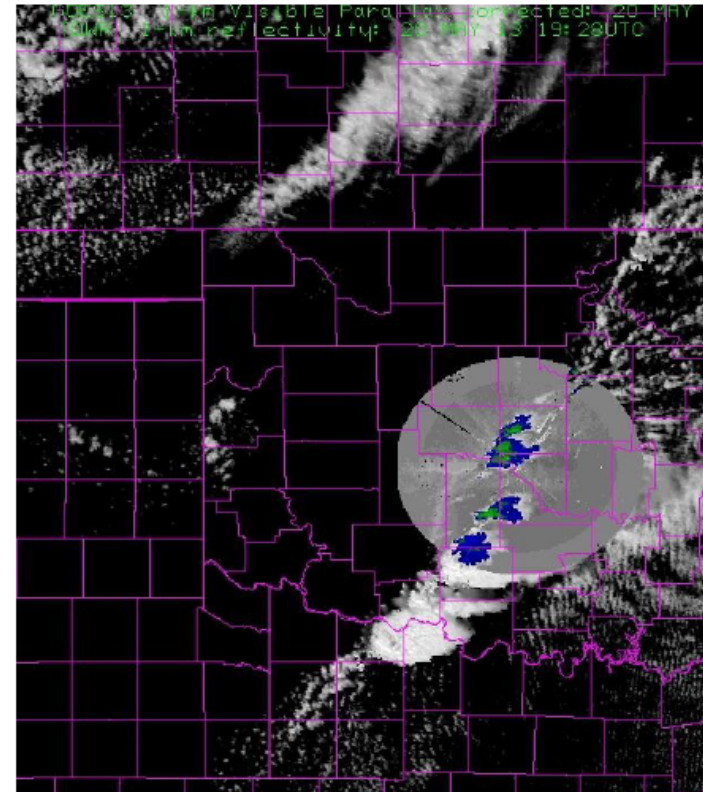




Applications of concurrent super rapid sampling from GOES-14 SRSOR, radar and lightning data



- Explore the importance of simultaneous 1-minute GOES, radar and lightning data for:
- Identification and tracking of boundaries, convective initiation
- Continuity of overshooting tops, lightning, precipitation, severe weather signatures
- Demonstrate a prototype system combining 1-min GOES-14, MPAR or TDWR radar, LMA and Earth Networks data



TDWR reflectivity superimposed on parallax corrected GOES-13 visible image, 1928 UTC 20 May 2013.

Determine how/if the full temporal resolution of GOES-R and radar data can be used together to add value to monitoring and forecasting convective weather

4/18/14

Bob Rabin, Don MacGorman, Pam Heinselman (NSSL), Tim Schmit (ASPB),
Kristin Calhoun (NSSL/CIMMS), Steve Albers (ESRL/GSD/CIRA)