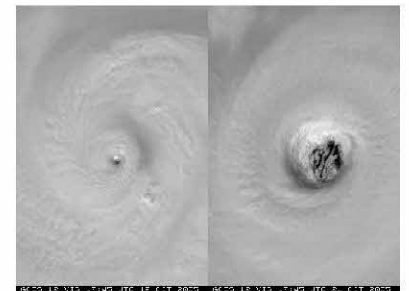
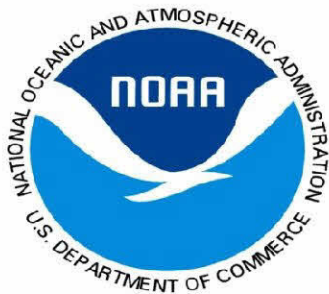


# Tropical Cyclone Intensity Prediction

Mark DeMaria  
NOAA/NESDIS/StAR, Fort Collins, CO

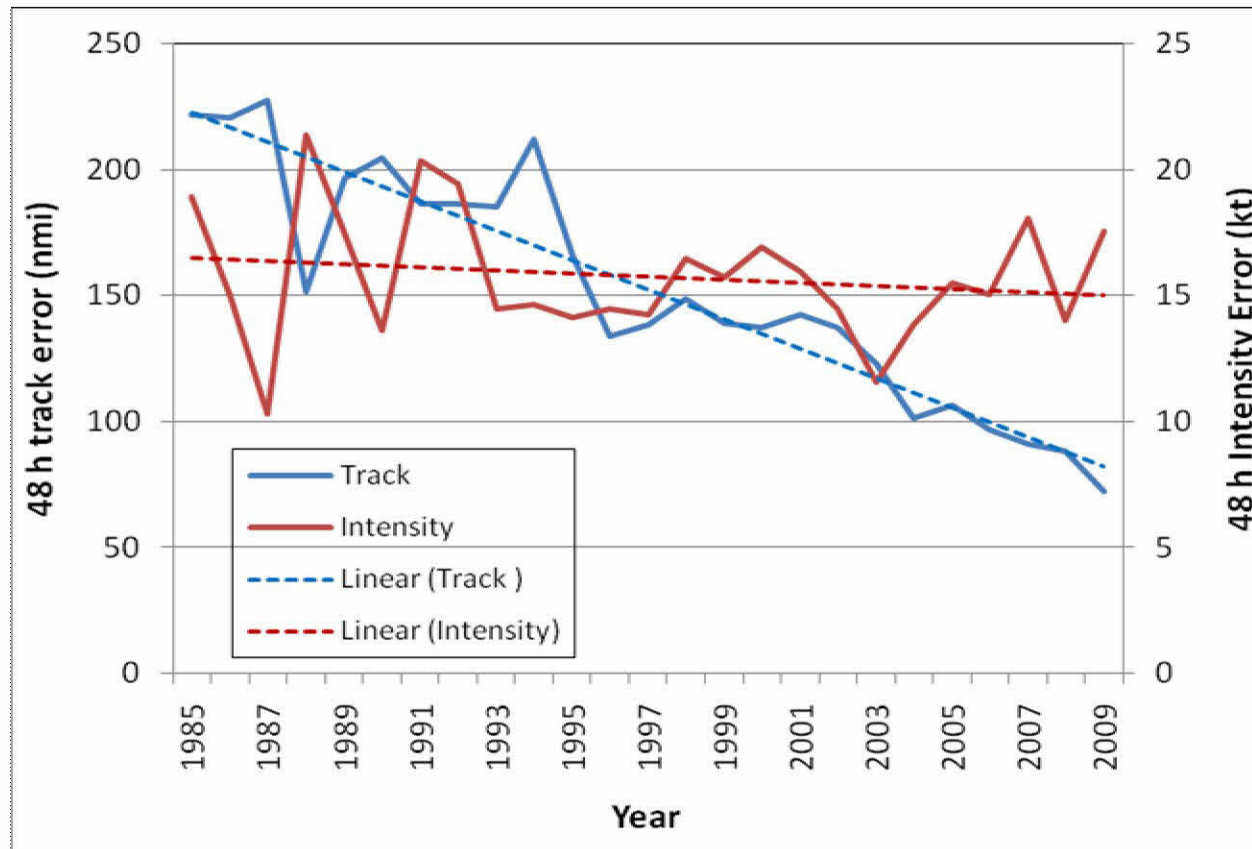
OCONUS Proving Ground Meeting  
Honolulu, Hawaii  
July 28-30, 2010



# Outline

- Background on Tropical cyclone Intensity Forecasting
- NHC Proving Ground products
- Suggestions for additional products
  - West Pacific statistical intensity models
  - TPW input to statistical models
  - Multi-sensor, RGB and lightning products for center tracking
  - Synthetic ABI data from numerical models

# NHC 48 h Atlantic Track and Intensity Errors 1985-2009



Track            63% Improvement in 24 yr  
Intensity        9% Improvement in 24 yr  
HFIP Goals: 20% in 5 yr, 50% in 10 yr

# Operational Intensity Forecast Models

- GFDL and HWRF
  - 3-D coupled ocean atmosphere models
  - Since 1995 and 2007
- SHIPS and LGEM
  - Statistical-dynamical models
  - Since 1991 and 2006

2007-2009 Atlantic Intensity Errors

